

# MONTHLY MEMBERSHIP PROGRESS REPORT

LOCATION NEW YORK

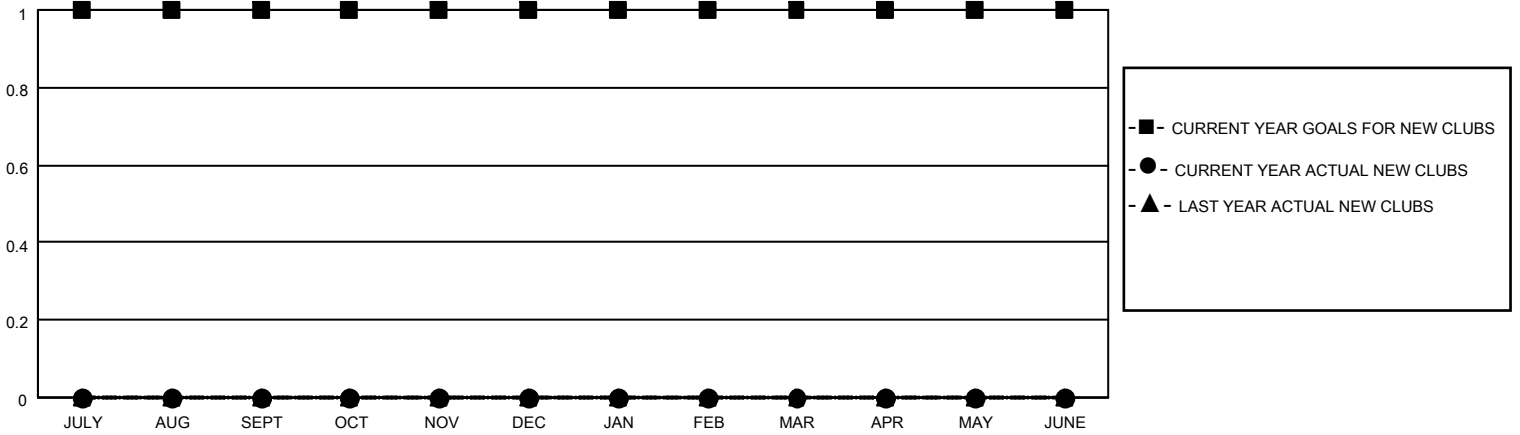
District 20 S

Results as of: 4/30/2023

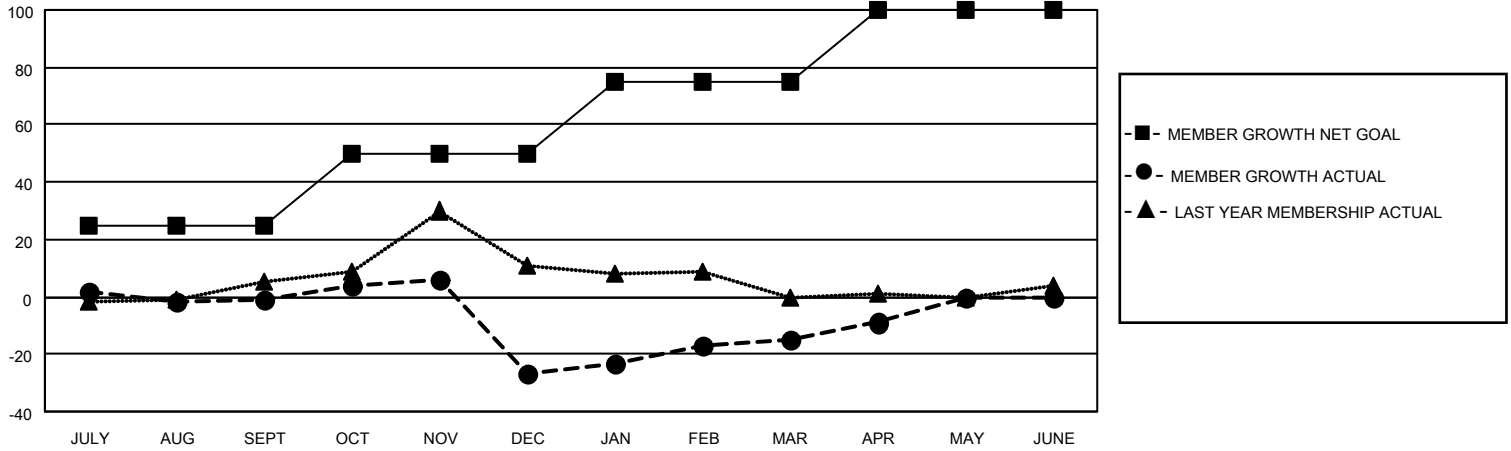
Clubs			
RESULTS FOR 2022-2023			
QUARTER	NEW CLUB GOAL	NEW CLUBS	DROPPED CLUBS
JULY/AUG/SEPT	1	0	0
OCT/NOV/DEC	0	0	0
JAN/FEB/MAR	0	0	0
APR/MAY/JUNE	0	0	0

Members			
RESULTS FOR 2022-2023			
QUARTER	MEMBER GROWTH NET GOAL	MEMBER GROWTH ACTUAL	DROPPED MEMBERS ACTUAL (including transfers)
JULY/AUG/SEPT	25	15	16
OCT/NOV/DEC	25	29	54
JAN/FEB/MAR	25	25	11
APR/MAY/JUNE	25	8	2

**GOALS AND ACTUAL NEW CLUBS CUMULATIVE**



**GOALS AND ACTUAL MEMBERS CUMULATIVE**



**DROPPED CLUBS: 0**

**21 CLUBS OF 43 ADDED 1 OR MORE NEW MEMBERS**

**GENDER DISTRIBUTION**

MALE	824 (66.34%)
FEMALE	418 (33.66%)
NON BINARY	0 (0.00%)
PREFER NOT TO ANSWER	0 (0.00%)

**DROPPED MEMBERS**

[CLICK HERE FOR CUMULATIVE MEMBERSHIP DATA](#)

DECEASED	12
CLUB CANCELLED	0
OTHER	71
<b>TOTAL</b>	<b>83</b>

TOTAL FAMILY UNIT MEMBERS	88
FAMILY MEMBERS PAYING HALF DUES	46